

Please don't forget:

- Note the date and replace your filter cartridges every six months.
- Your satisfaction is guaranteed. All HAHN replacement filters come with a 180-day warranty, and if for any reason you are not satisfied with your purchase, simply call us at **(888) 245-3114** for a full refund upon return.

Thank you for choosing HAHN Filtration!



Manufactured by Sink Warehouse, LP  
4601 Spicewood Springs Rd, Suite 1-100, Austin, Texas 78759  
**(888) 245-3114 • [www.hahnfiltration.com](http://www.hahnfiltration.com)**

HF-SH-R\_INST\_201403



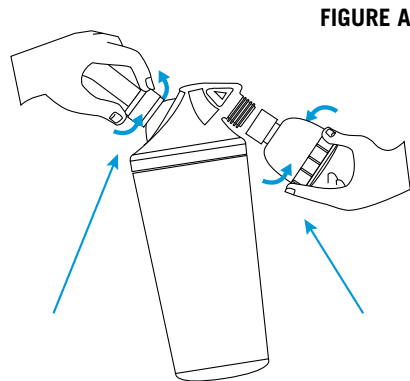
## Shower Filter Replacement Instructions

**MODEL HF-SH-R** for use with **HF-SH**

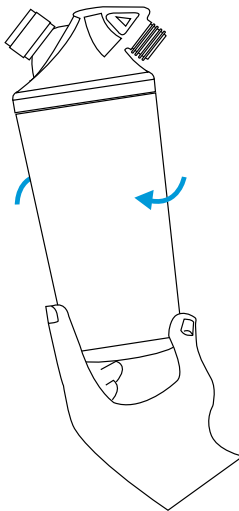
## Replacement Instructions

1. Remove the entire filter system from your shower pipe by turning the chrome swivel collar counter-clockwise. **(FIGURE A)**
2. Remove the shower head from the filter system.
3. Remove the lower filter cartridge by turning it counter-clockwise. **(FIGURE B)**
4. Unwrap the new replacement cartridge and remove the yellow label and yellow plastic shipping cap from the top end of the cartridge.
5. Install the new cartridge by turning it clockwise.
  - Tighten firmly by hand — if the filter is not tightened firmly it will leak around the seam between the upper filter housing and the cartridge.
6. Re-attach the filter system to your shower pipe by turning the chrome swivel collar clockwise.
  - Make sure that the white washer is still in place inside the chrome swivel collar.
7. Before re-attaching the shower head, turn on the water to flush and activate the filter until water runs clear.
  - Use cold water for the initial flushing.
  - Wait 30 seconds for temperature change.
  - Run water until clear and then turn off and back on several times.
  - Repeat this procedure until the initial surge of water is clear.

Note: do not remove the filter cartridge while the filter is still attached to the shower pipe, this may cause damage to the filter where it connects to the shower pipe, or to the pipe connection behind the shower wall.



**FIGURE A**



The initial surge of water will be discolored with carbon fines and may soil your shower stall. This carbonized water is beneficial to plants and the environment. It can be discarded in a plant bed or down the drain.

**FIGURE B**